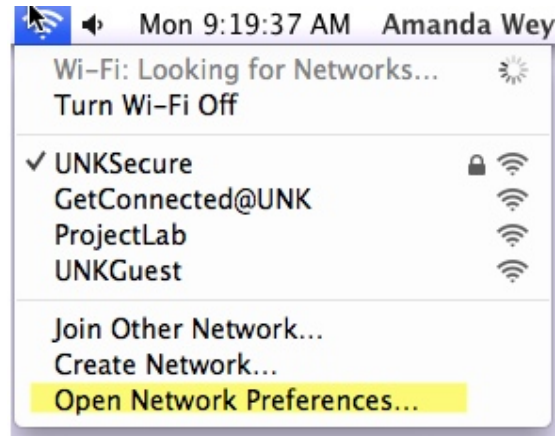
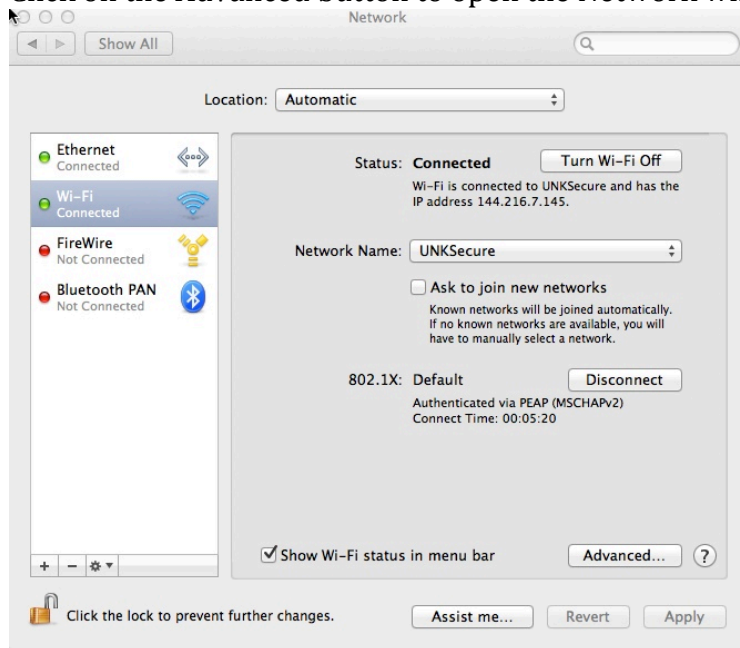


Changing your wireless password after you have reset your EASI password

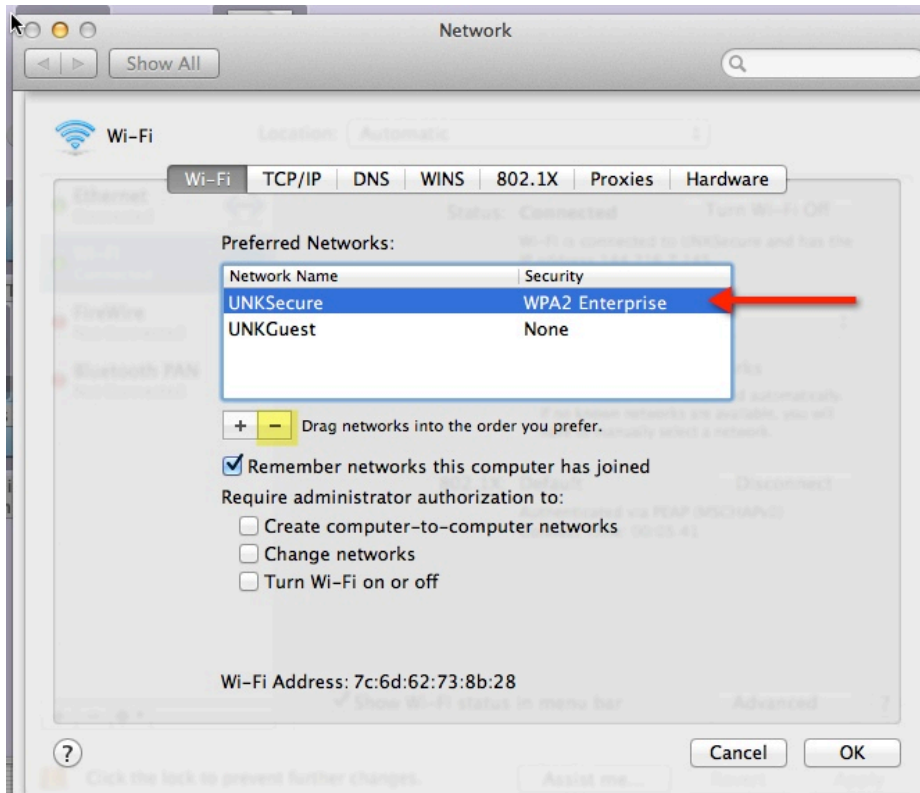
Click on the wireless icon in the upper left and corner – Choose “Open Network Preferences”



Click on the Advanced button to open the Network window



Click on “UNK Secure” and then click the minus button to delete



Click on the “+” sign to add the network. Your username is your entire UNK email address and your password is your EASI password.



Click OK when you are done entering this information. Click OK again to go back to the Network window.

Click "Apply" and close the window.

